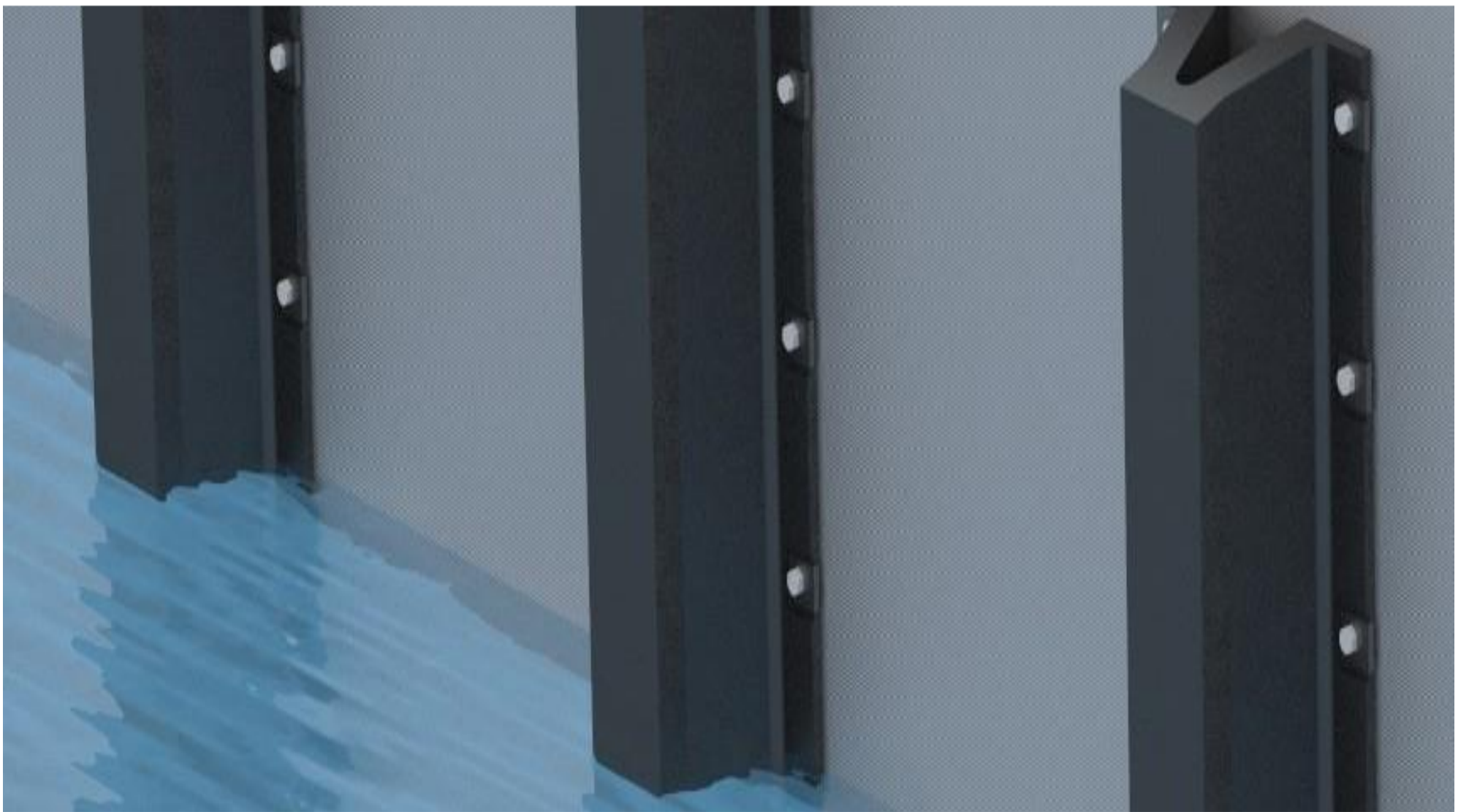
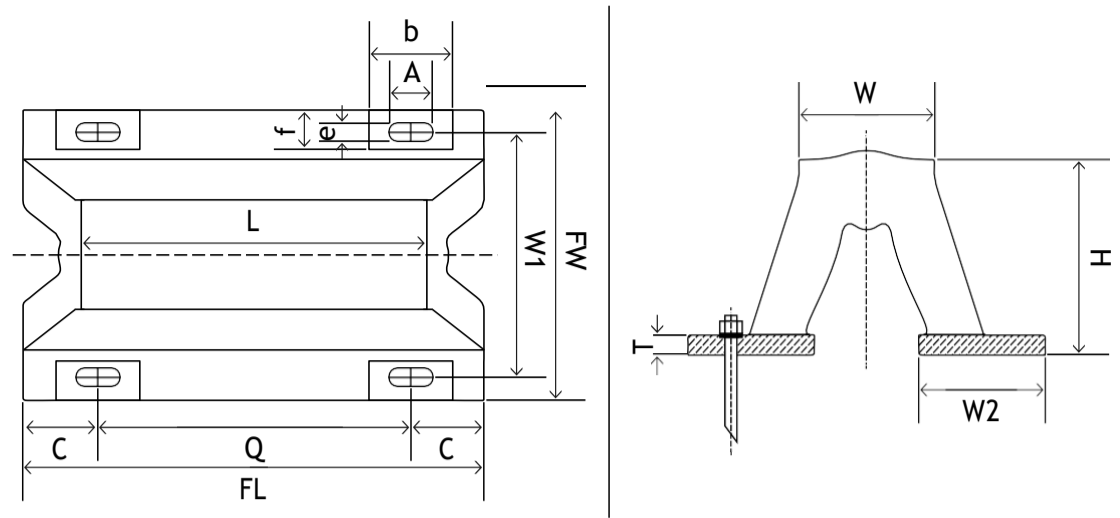
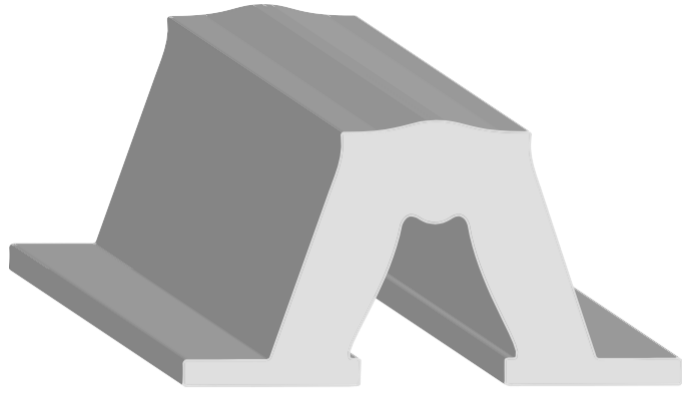


# Rubber ArchFenders





**Arch Fender Size Table**

**Highly Durable & Incredibly Versatile**

Arch fenders have become increasingly popular in recent years due to the unique features the fender offers. These fenders are manufactured from a single piece of rubber moulding, using a simple yet rugged design. This enables arch fenders to be very strong and hardwearing. The simple design also reduces the amount of maintenance needed, even after a period of heavy use. The shape of the arch fenders also grants it unique properties. The base either side of the fender is attached to the desired surface, which enables the arch to compress and move while under pressure. This enables it to absorb greater impacts without warping and deterioration.

**Available In Two Options**

- Arch fenders with a rubber contact face

This format is perfect for general-purpose applications. The rubber face grants the fender with excellent high friction properties. This is used to greatly reduce any potential movements between the sea vessel and the wharf.

- Arch fenders with UHMW-PE head plate

The key feature of this particular arch fender is the replaceable head plate. The UHMW-PE plates are highly durable while also offering superb non-marking and low friction properties. This reduces any potential damage that may be done to both the sea vessel and the wharf. The non-marking properties are desirable in marinas and other applications that are used by yachts and other private craft as they preserve the appearance of the vessel. The head plates can be easily replaced which helps increase the life of the fender itself.

Model	L	FL	H	T	W	FW	W1	W2	f	e	C	b	A	Q
ECR 150	1000	1075	150	22.5	98	300	240	96	55	25	110	95	50	855
	1500	1575	150	22.5	98	300	240	96	55	25	113	95	50	675
	2000	2075	150	22.5	98	300	240	96	55	25	215	95	50	620
	2500	2575	150	22.5	98	300	240	96	55	25	220	95	50	785
	3000	3075	150	22.5	98	300	240	96	55	25	215	95	50	715
ECR 200	1000	1100	200	30	145	400	320	128	75	29	120	105	58	860
	1500	1600	200	30	145	400	320	128	75	29	120	105	58	680
	2000	2100	200	30	145	400	320	128	75	29	120	105	58	620
	2500	2600	200	30	145	400	320	128	75	29	123	105	58	785
	3000	3100	200	30	145	400	320	128	75	29	120	105	58	715
ECR 250	1000	1125	250	33	164	500	410	160	90	32	130	125	64	865
	1500	1625	250	33	164	500	410	160	90	32	133	125	64	680
	2000	2125	250	33	164	500	410	160	90	32	133	125	64	620
	2500	2625	250	33	164	500	410	160	90	32	128	125	64	790
	3000	3125	250	33	164	500	410	160	90	32	133	125	64	715
ECR 300	1000	1150	300	33	225	600	490	195	105	35	140	140	70	870
	1500	1650	300	33	225	600	490	195	105	35	140	140	70	685
	2000	2150	300	33	225	600	490	195	105	35	138	140	70	625
	2500	2650	300	33	225	600	490	195	105	35	140	140	70	790
	3000	3150	300	33	225	600	490	195	105	35	140	140	70	715
ECR 400	1000	1200	400	40	300	800	670	260	120	41	150	165	82	900
	1500	1700	400	40	300	800	670	260	120	41	150	165	82	700
	2000	2200	400	40	300	800	670	260	120	41	148	165	82	700
	2500	2700	400	40	300	800	670	260	120	41	150	165	82	700
	3000	3200	400	40	300	800	670	260	120	41	150	165	82	700
ECR 500	1000	1250	500	45	375	1000	840	325	140	47	160	180	94	930
	1500	1750	500	45	375	1000	840	325	140	47	160	180	94	715
	2000	2250	500	45	375	1000	840	325	140	47	158	180	94	645
	2500	2750	500	45	375	1000	840	325	140	47	160	180	94	810
	3000	3250	500	45	375	1000	840	325	140	47	160	180	94	730
ECR 600	1000	1300	600	54	450	1200	1010	390	160	50	170	195	100	960
	1500	1800	600	54	450	1200	1010	390	160	50	170	195	100	730
	2000	2300	600	54	450	1200	1010	390	160	50	168	195	100	655
	2500	2800	600	54	450	1200	1010	390	160	50	170	195	100	820
	3000	3300	600	54	450	1200	1010	390	160	50	170	195	100	740
ECR 800	1000	1400	800	72	600	1600	1340	520	260	68	180	270	136	1040
	1500	1900	800	72	600	1600	1340	520	260	68	180	270	136	770
	2000	2400	800	72	600	1600	1340	520	260	68	180	270	136	680
	2500	2900	800	72	600	1600	1340	520	260	68	183	270	136	845
	3000	3400	800	72	600	1600	1340	520	260	68	180	270	136	760
ECR1000	1000	1500	1000	90	750	2000	1680	650	300	68	200	290	136	1100
	1500	2000	1000	90	750	2000	1680	650	300	68	200	290	136	800
	2000	2500	1000	90	750	2000	1680	650	300	68	200	290	136	700



## Arch Fender Performance Table

Model		FS		FH		FO		FL	
		52.5%	55%	52.5%	55%	52.5%	55%	52.5%	55%
ECR150	E	7.1	8.4	6.1	7.1	4.1	5.1	3.1	4.1
	R	135	182	147	157	87.7	117	58	79.6
ECR 200	E	11.2	14.3	11.2	12.2	8.2	9.2	5.1	6.1
	R	176	240	156	208	114	156	78.5	104
ECR 250	E	29	41.2	22.8	24	18.8	19.8	16.6	17.7
	R	281	391	216	300	179	249	154	213
ECR 300	E	41.8	44.8	31.6	33.7	25.5	27.4	22.4	24.5
	R	330	460	254	353	290	300	181	251
ECR 400	E	74.4	79.4	57.1	61.2	46.9	50	40.8	43.9
	R	441	612	339	469	281	361	241	334
ECR 500	E	115	123	89.5	94.9	73.4	78.5	69.4	67.3
	R	551	765	423	588	351	487	301	418
ECR 600	E	166	179	129	138	106	113	90.7	97
	R	660	917	508	706	420	590	361	502
ECR 800	E	296	317	228	254	189	202	162	173
	R	881	1224	677	940	561	779	481	669
ECR 1000	E	463	496	356	381	295	317	253	271
	R	1101	1529	846	1176	703	975	602	835

### Key Features:

- Rugged single piece rubber moulding
- PIANC standard approved
- Incredibly strong and durable
- Great shear performance
- Wide choice of rubber compounds
- Proven design with thousands installed
- Available with low friction UHMW-PE face

### Potential Applications:

- Cargo berths
- Workboat harbours
- RoRo and cruise terminals
- Barge and tug berth

**Note:** **FS** - Super high reaction force. **FH** - High reaction force. **FO** - Standard reaction force. **FL** - Low reaction force. **E** - Energy absorption. **R** - Reaction force.

